



IN PURSUIT OF **DIGITAL TRUST**

DTEF: A Framework for the 21st Century

Egide Nzabonimana
ISACA BELGIUM President

Learning Objectives

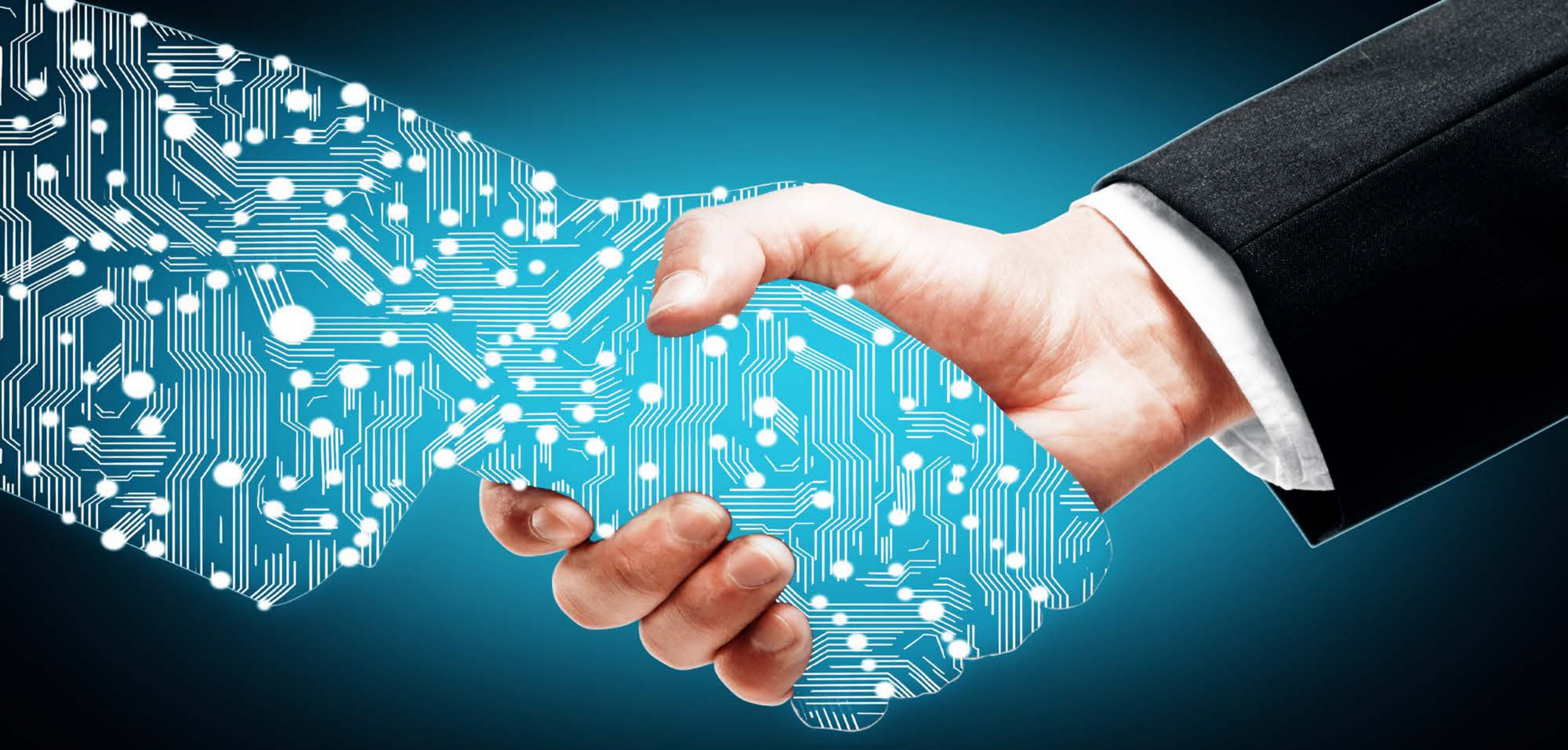
The topic covered in the presentation:

1. Define **digital trust**.
2. Explain the value and impact of digital trust to an organization's success.
3. Summarize the foundations of the Digital Trust Ecosystem Framework.
4. Describe the nodes and domain that comprise the DTEF.

IN PURSUIT OF **DIGITAL TRUST**

Introduction

IN PURSUIT OF **DIGITAL TRUST**



IN PURSUIT OF **DIGITAL TRUST**

As consumer...

Why do you choose to do business with a company online verses other companies?

When you enter your personal information into a website, do you feel like your information is being protected?

As an organization...

Does your consumers interact with you because they want to or have to - and do they trust those interactions?

What is your organization doing today to ensure that your users, customers or consumers feel safe using your online services?

IN PURSUIT OF **DIGITAL TRUST**

The Digital Trust Imperative

Elements of Digital Trust



- Digital trust is the next evolution of digital transformation
- Driven by business needs to enable competitive drive and meet customer expectations
- Digital trust is a significant factor driving consumers' decisions
- It helps to improve enterprises' reputation
- Drives customer loyalty

IN PURSUIT OF **DIGITAL TRUST**

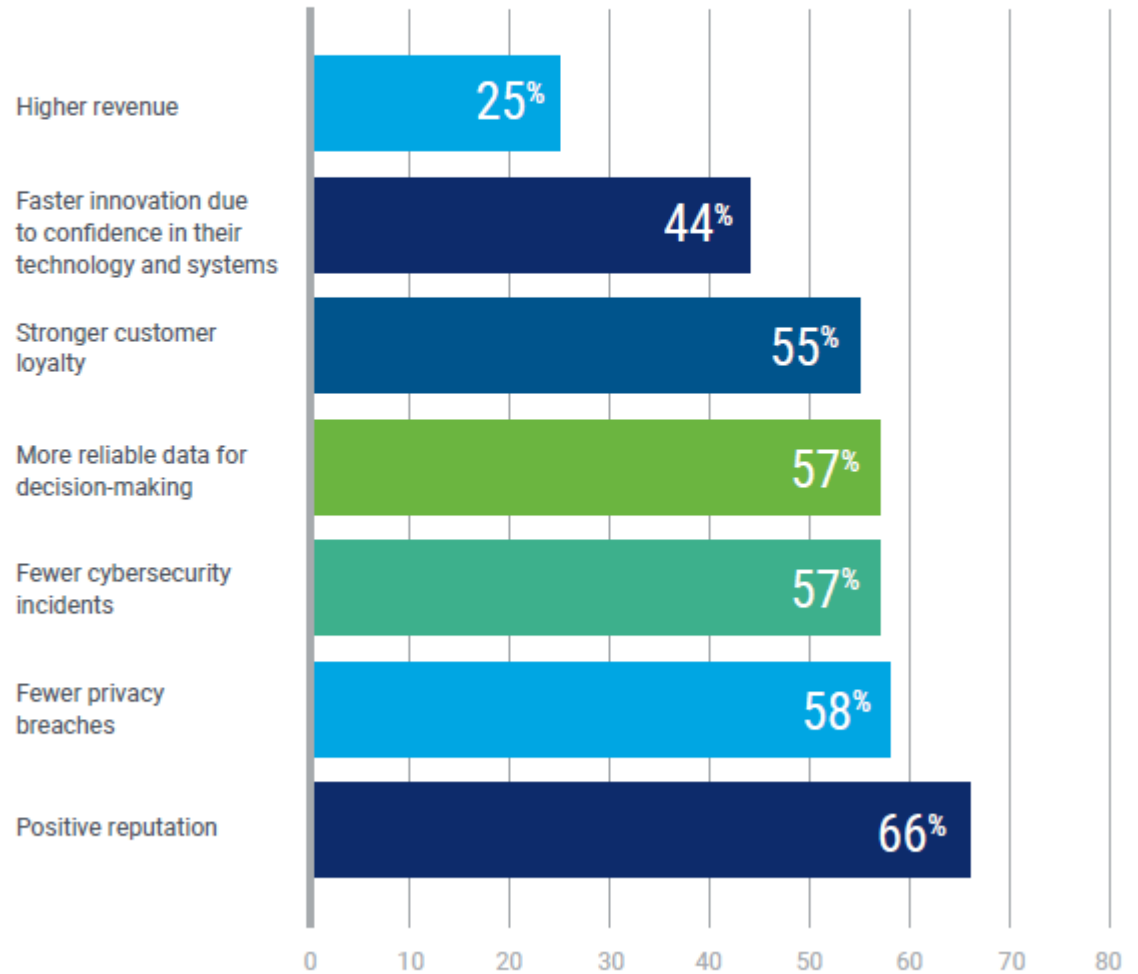
Benefits of Digital Trust

Q2 - 2022 ISACA Survey

There are numerous benefits to having high levels of digital trust.

FIGURE 2 – Digital Trust-related Benefits

Respondents report that high levels of digital trust lead to the following benefits.



IN PURSUIT OF **DIGITAL TRUST**

What is Digital Trust

ISACA's Digital Trust Definition

Digital trust is the confidence in the integrity of the relationships, interactions and transactions among providers and consumers within an associated digital ecosystem. This includes the ability of people, organizations, processes, information and technology to create and maintain a trustworthy digital world.

IN PURSUIT OF **DIGITAL TRUST**

Digital Trust Ecosystem Framework

Why ISACA Chose to Focus on Digital Trust

Digital Trust Career Development



63%

Say digital trust is very or **extremely relevant to their job role**

Professionals rely on associations such as ISACA to enhance their knowledge in digital trust and add value, including:

82% Stay current with industry trends

73% Be recognized as a thought-leader

60% Access tools and resources

49% Earn recognized credentials

IN PURSUIT OF **DIGITAL TRUST**

DTEF is Based on Systems Thinking

The right philosophy for a complex world

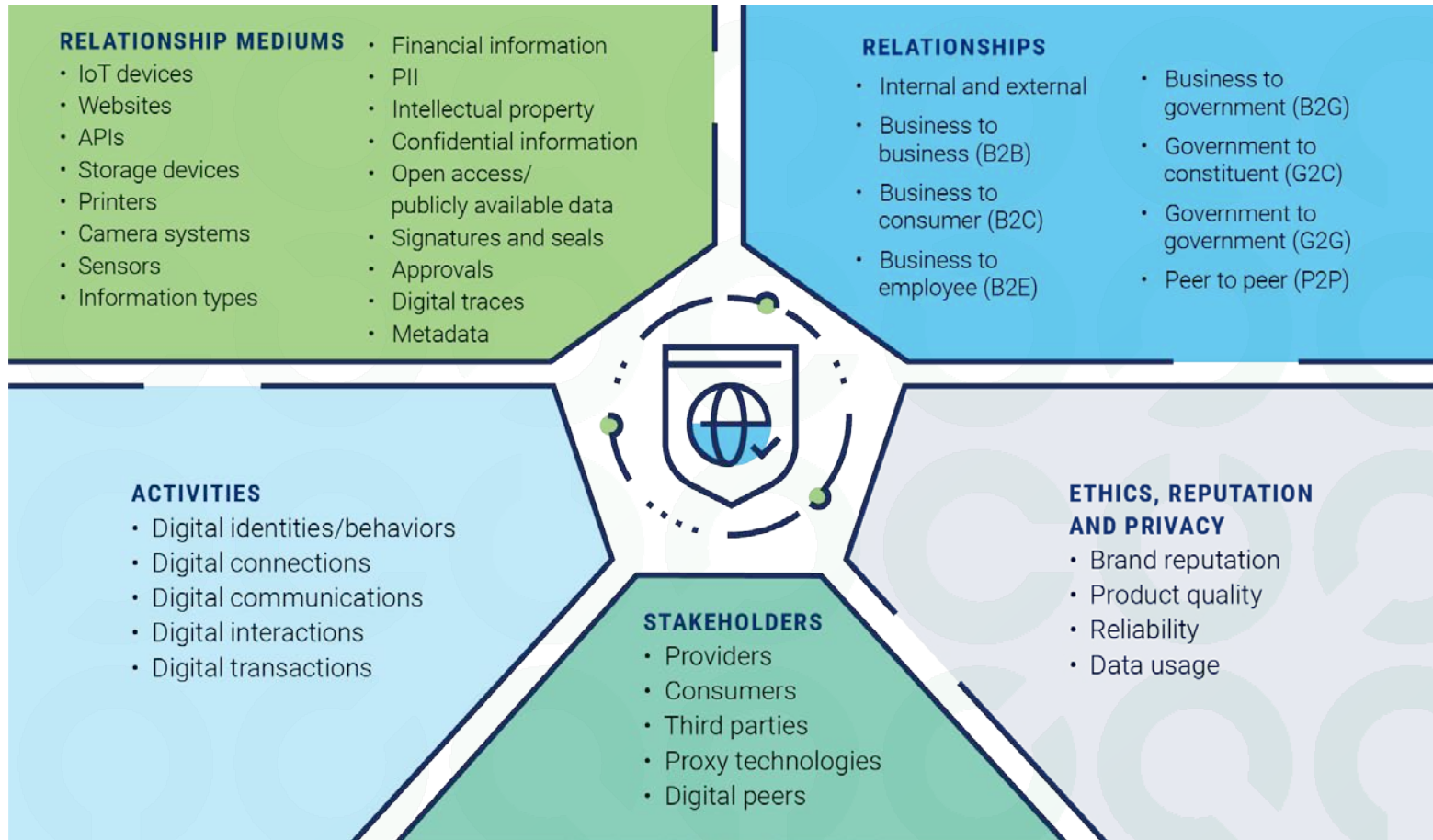
Systems thinking describes a complex network of events, relationships, technologies, processes and people interacting in expected and unexpected ways.

A holistic approach that focuses on the way a system's parts interrelate rather than focusing on a system's component parts

Employing systems thinking enables organizations to consider the implications of their decisions and manage risk more comprehensively.

IN PURSUIT OF **DIGITAL TRUST**

Digital Trust Ecosystem

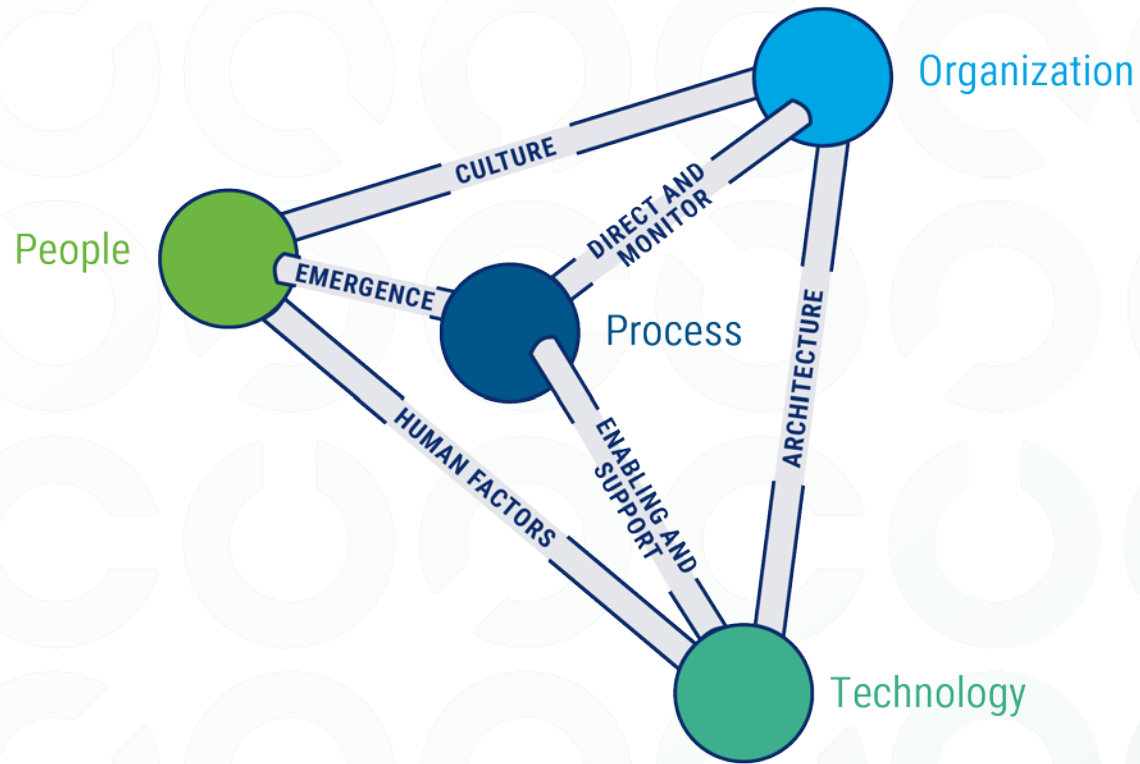


IN PURSUIT OF **DIGITAL TRUST**

Nodes

IN PURSUIT OF **DIGITAL TRUST**

Nodes

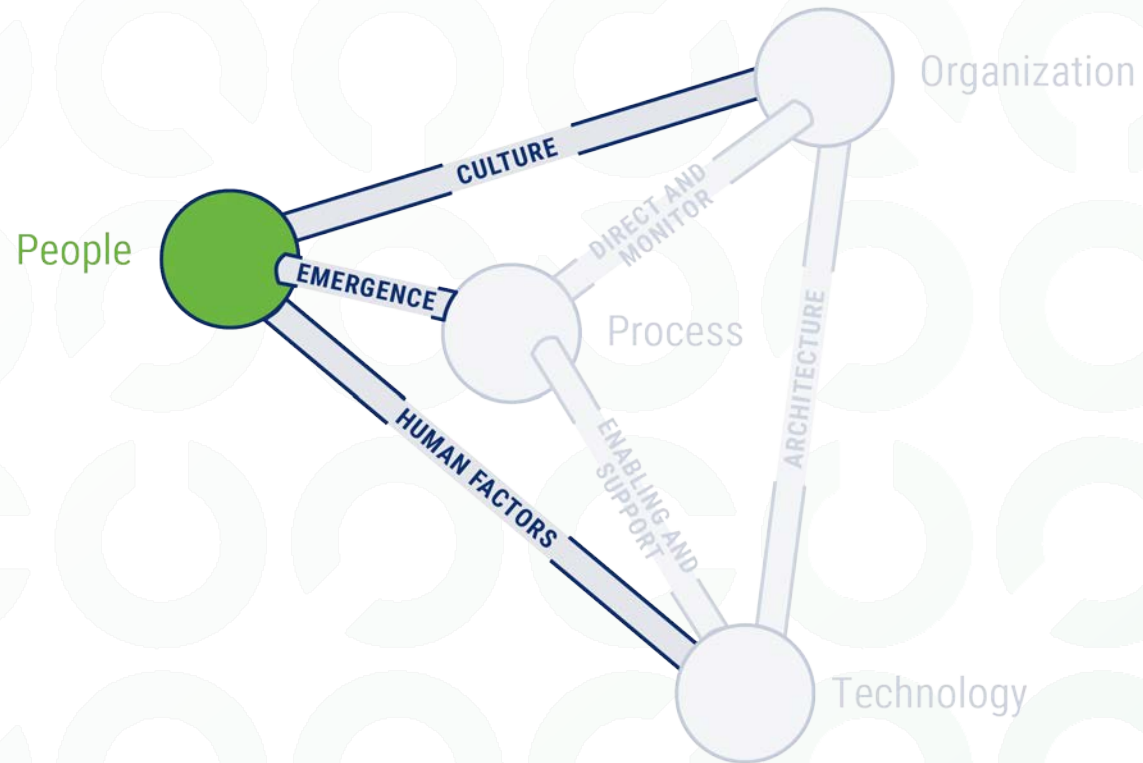


Nodes are the primary elements of the DTEF:

- People
- Process
- Technology
- Organization

IN PURSUIT OF **DIGITAL TRUST**

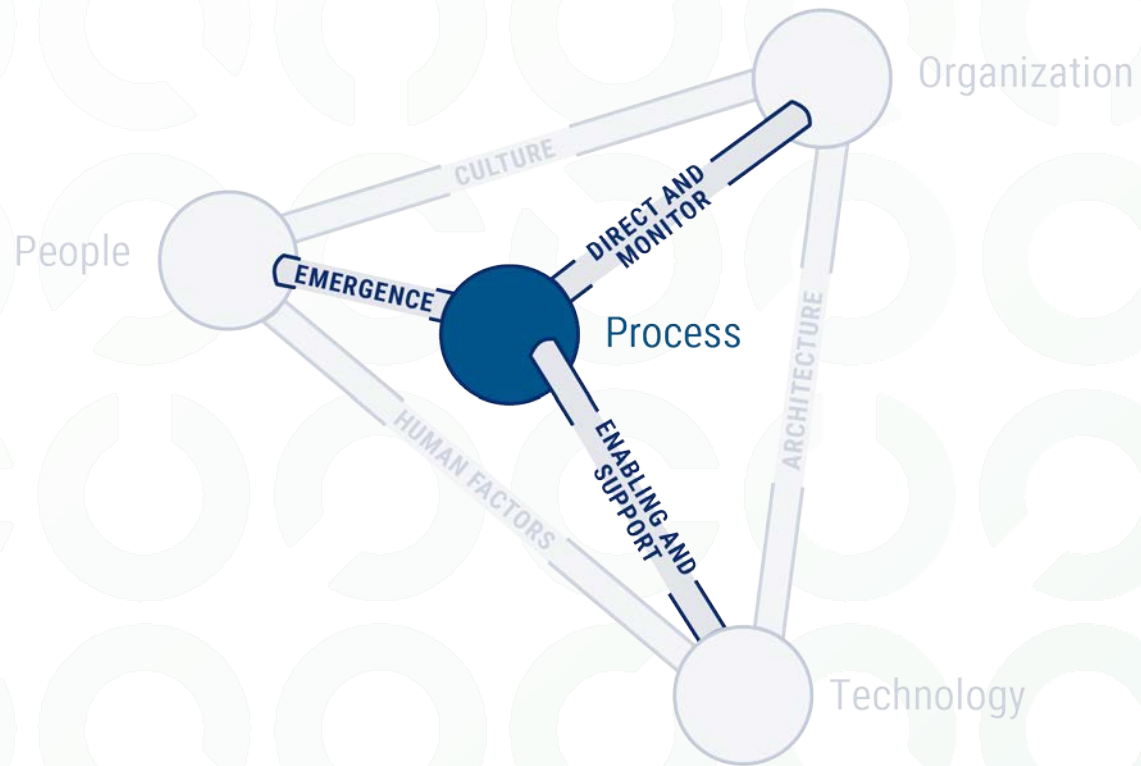
People



People connects to the Culture, Emergence and Human Factors domains

IN PURSUIT OF **DIGITAL TRUST**

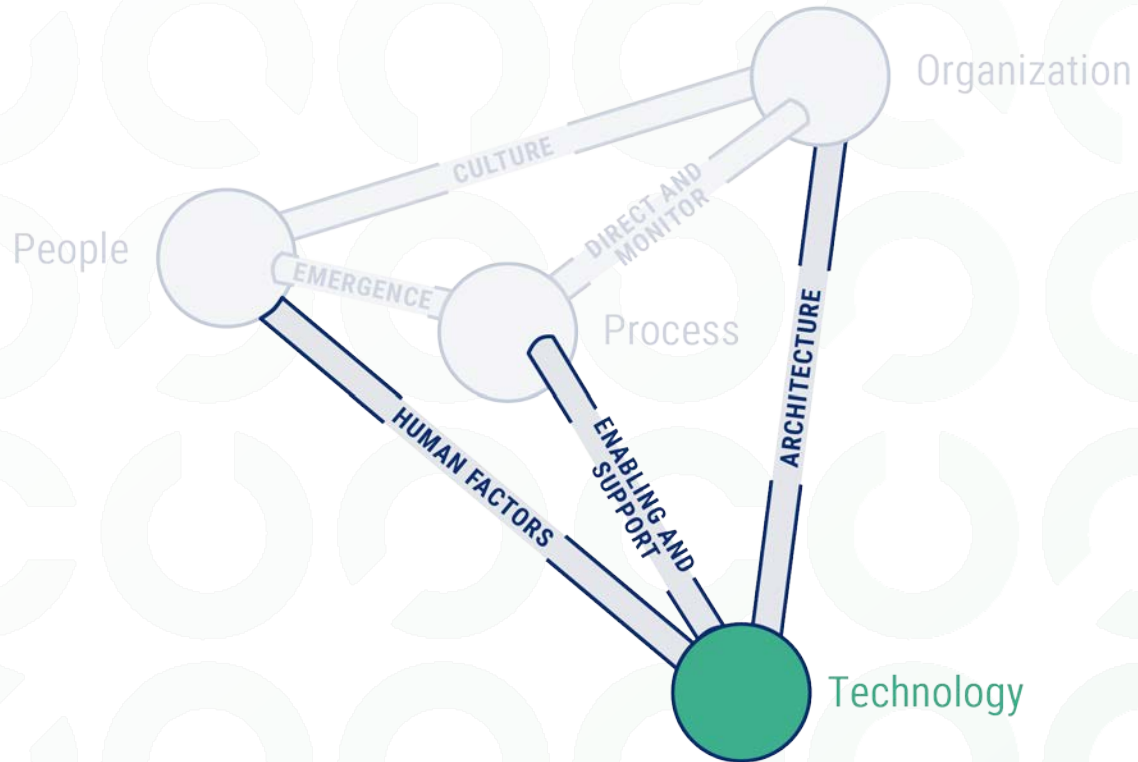
Process



Process connects to
Emergence, Direct and Monitor,
and Enabling and Support
domains

IN PURSUIT OF **DIGITAL TRUST**

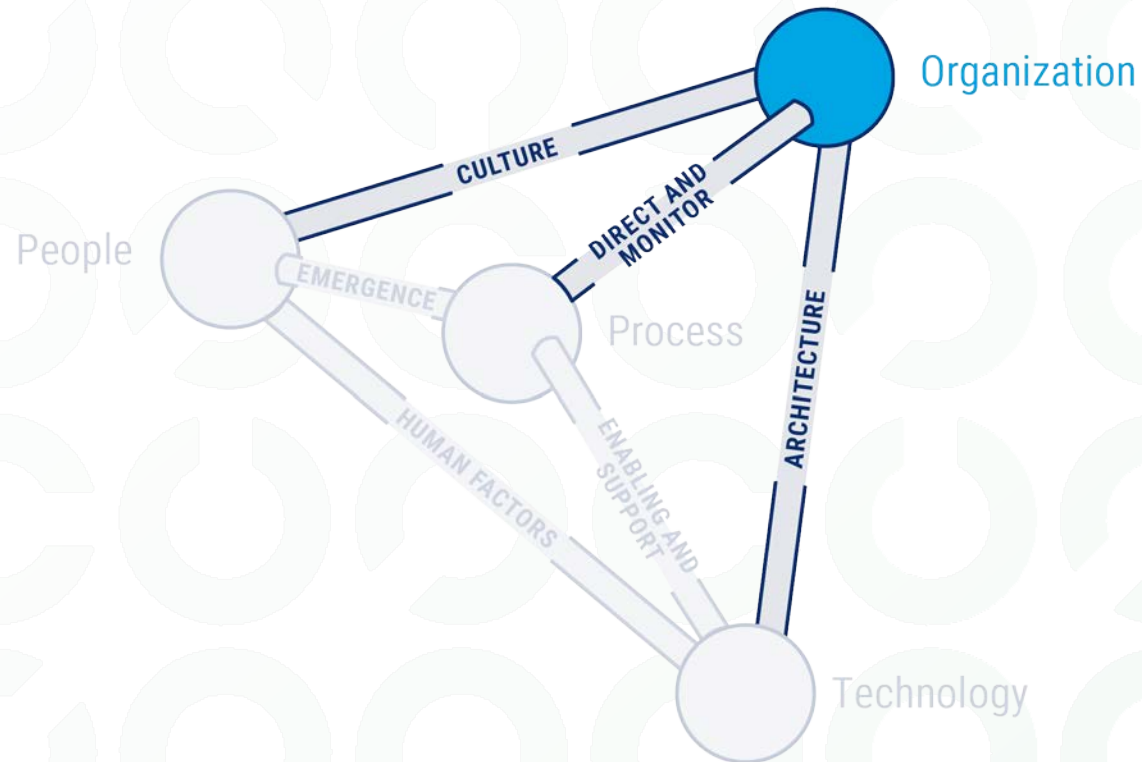
Technology



Technology connects to Human Factors, Enabling and Support, and Architecture domains

IN PURSUIT OF **DIGITAL TRUST**

Organization



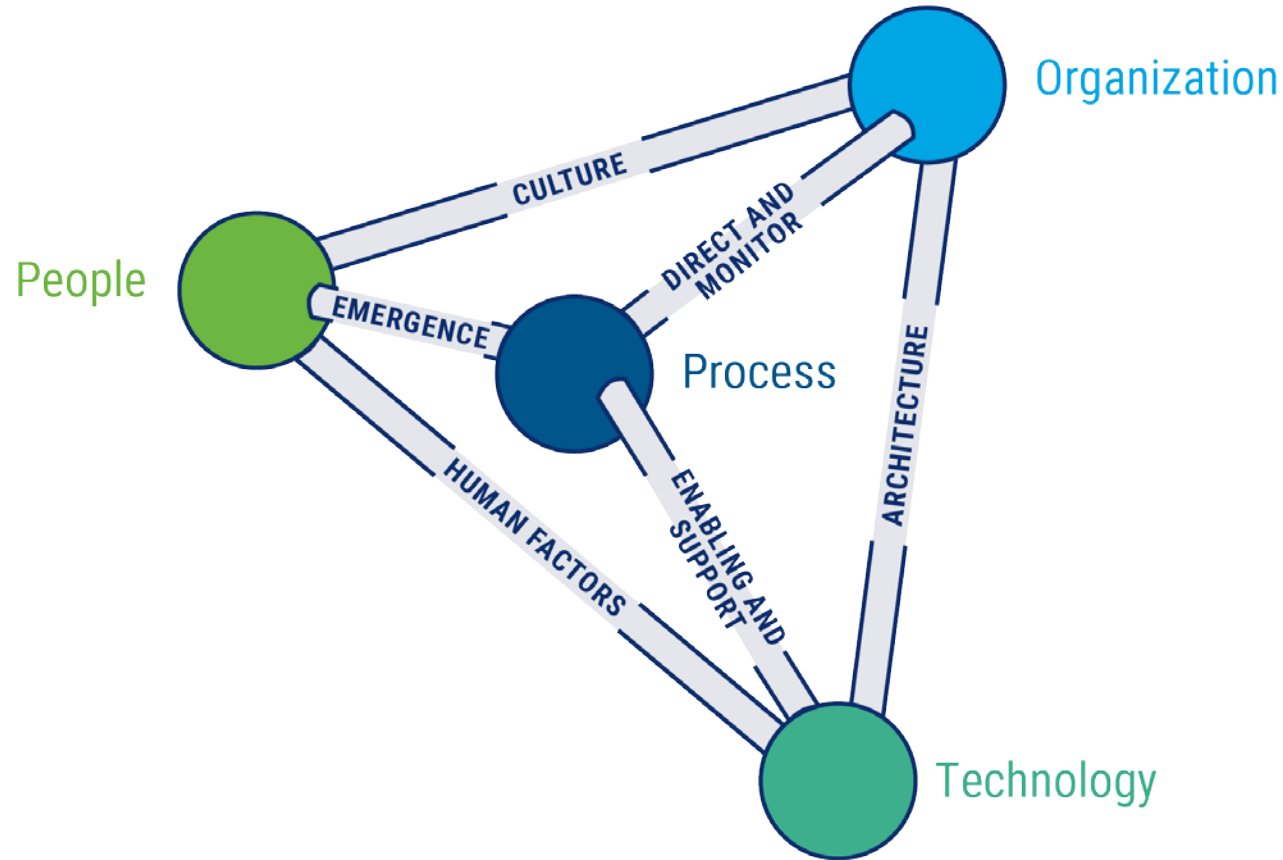
Organization connects to Culture, Direct and Monitor, and Architecture domains

IN PURSUIT OF **DIGITAL TRUST**

Domains

IN PURSUIT OF **DIGITAL TRUST**

Domains



Domains are flexible and reflect the primary influencers or tensions between the Nodes.

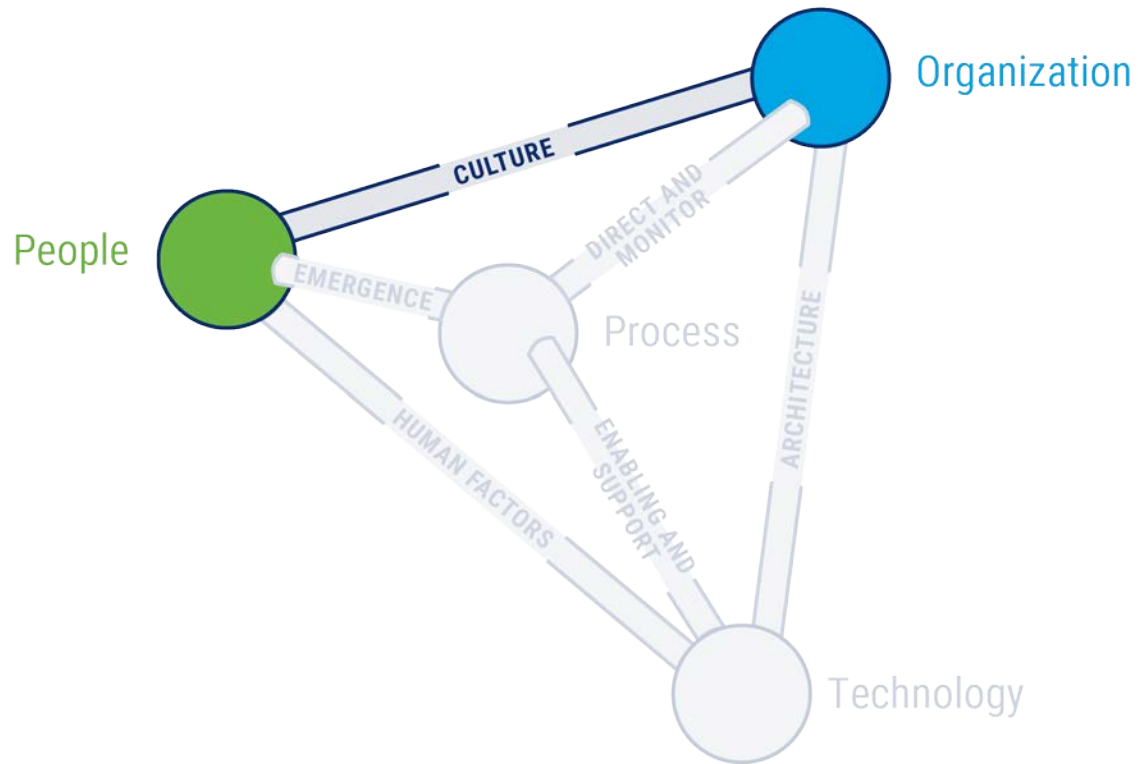
There are six domains:

- Culture
- Human Factors
- Emergence
- Enabling and Support
- Direct and Monitor
- Architecture

IN PURSUIT OF **DIGITAL TRUST**

Culture

Intersection of People and Organization

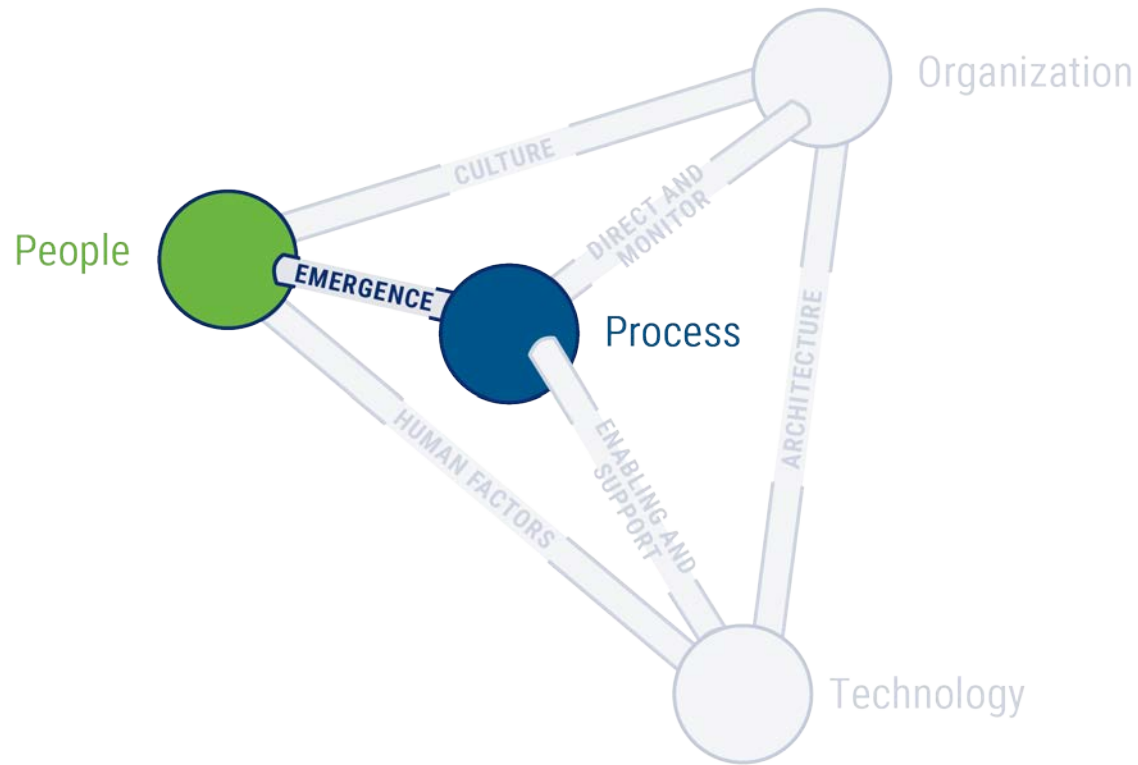


The effect of culture on people is a vital issue in digital trust ecosystems since people can either contribute to or compromise digital trust in an organization.

IN PURSUIT OF **DIGITAL TRUST**

Emergence

Intersection of People and Process

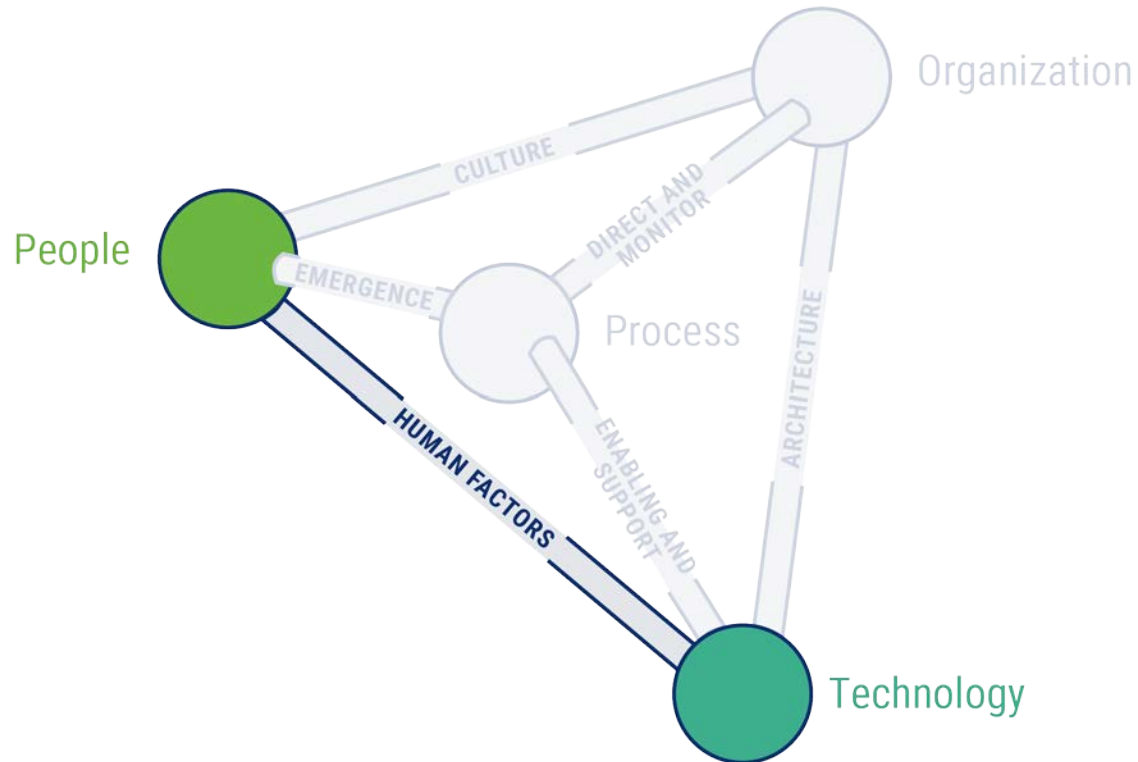


In DTEF, Emergence is the arising of new business opportunities, new behaviors, new processes and other relevant items as the subsystems between people and processes evolve.

IN PURSUIT OF **DIGITAL TRUST**

Human Factors

Intersection of People and Technology

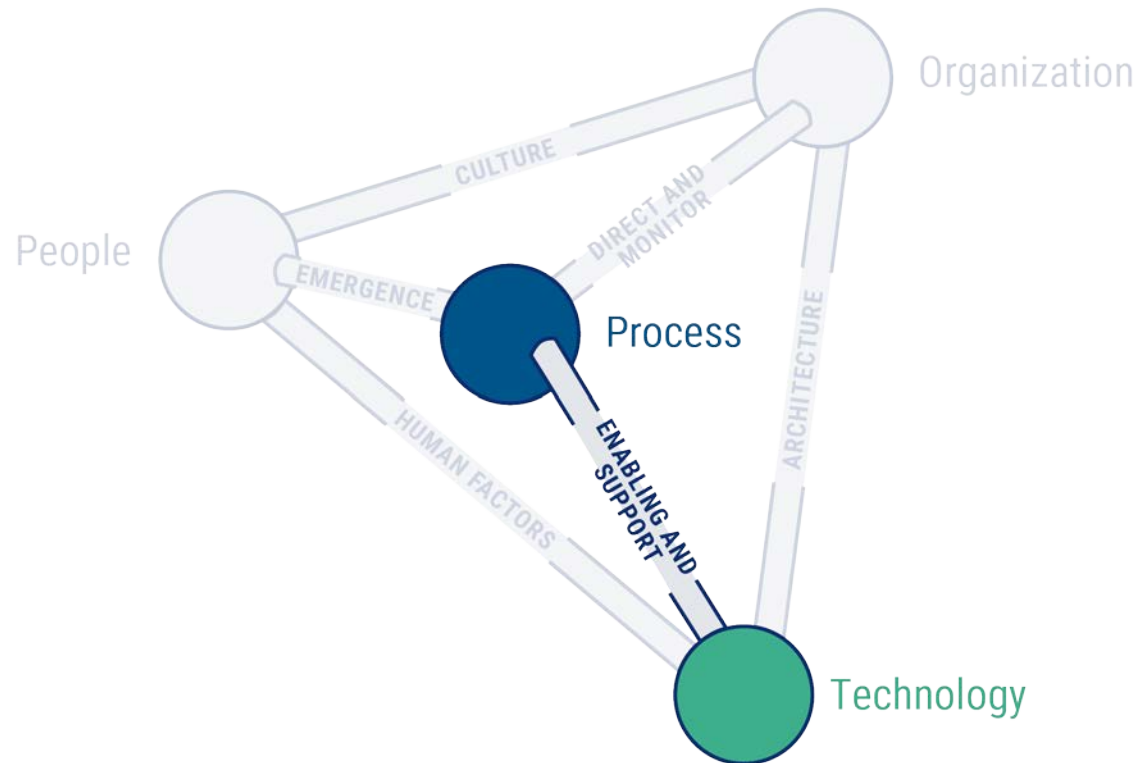


The Human Factors domain analyzes how humans interact with technology and the development of tools that facilitate digital trust objectives.

IN PURSUIT OF **DIGITAL TRUST**

Enabling and Support

Intersection of Process and Technology

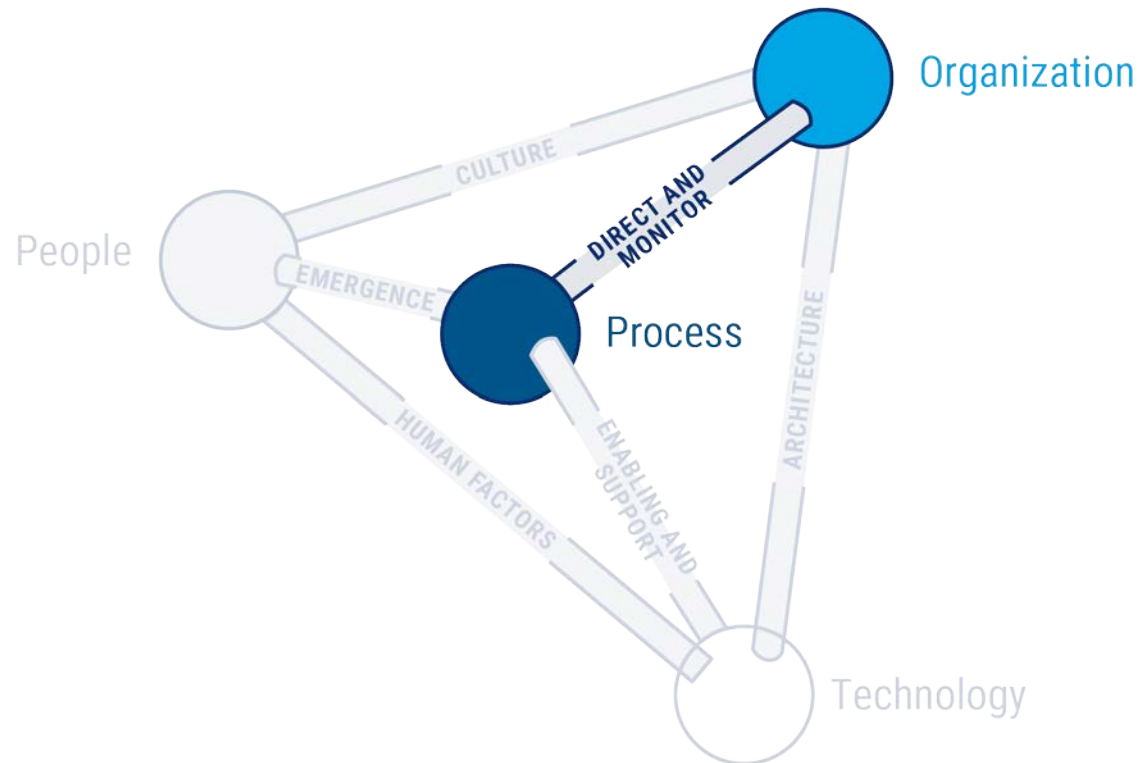


The Enabling and Support domain addresses the natural tension that exists between the interactions of technology and process within organizations. In the absence of a balanced process that supports technology, IT solutions fail to meet business objectives and become liabilities.

IN PURSUIT OF **DIGITAL TRUST**

Direct and Monitor

Intersection of Process and Organization



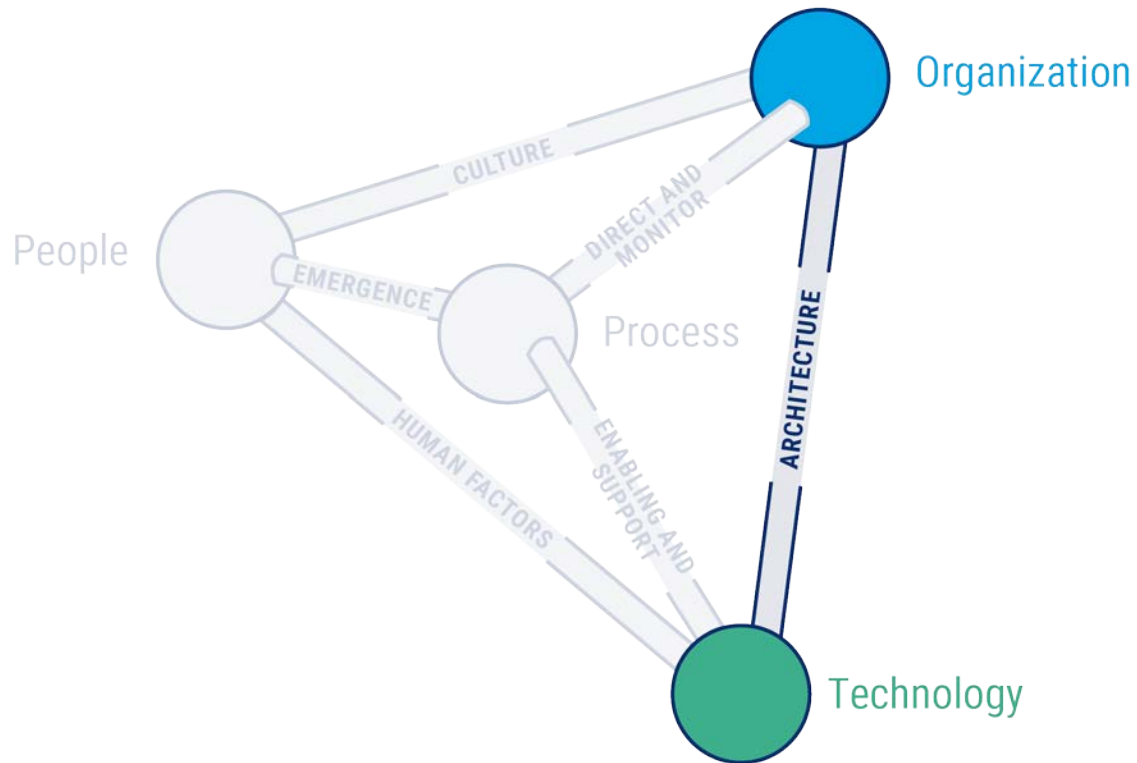
The Direct and Monitor domain includes such items as:

- Policies
- Standards, guidelines and other normative documentation
- Accountability rules
- Resource allocation and prioritization
- Metrics (for all the above)
- Compliance (as an overarching theme)

IN PURSUIT OF **DIGITAL TRUST**

Architecture

Intersection of Organization and Technology



Enterprise architecture must include and allow for:

- Capacity to evolve, scale and improve
- Capacity to react to contextual changes
- Fit for purpose
- Effectiveness and efficiency
- Consistency with policy and standards
- Maintainability and usability

IN PURSUIT OF **DIGITAL TRUST**

Other DTEF Components

IN PURSUIT OF **DIGITAL TRUST**

The Detail: Trust Factors, Practices, Activities and Outcomes, Etc.

Units within each domain

Each trust factor includes the following:

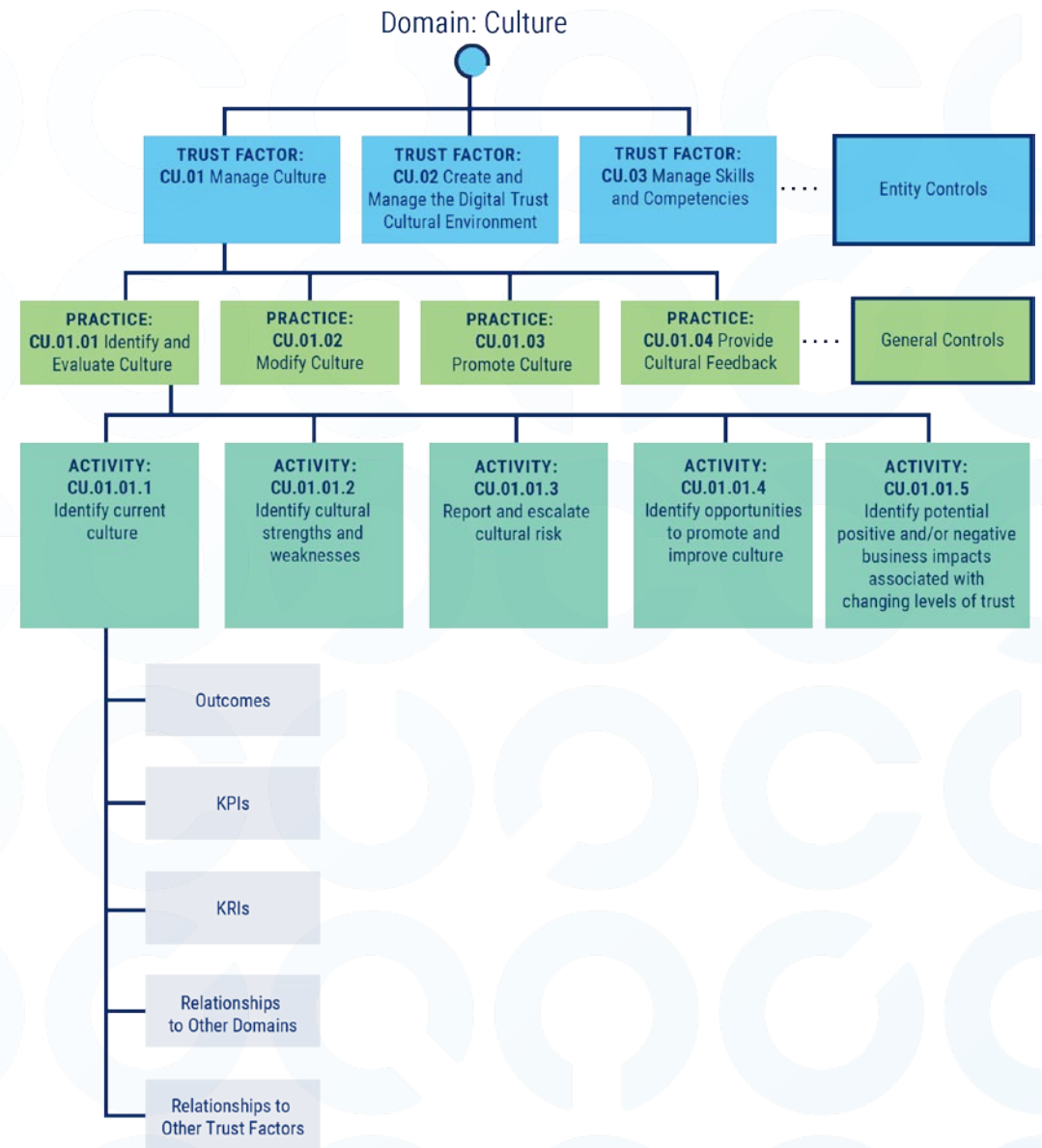
- Trust factor designator
- Trust factor name
- Description
- Entity level control
- Practices
- General control
- Activities
- Outcomes
- Key performance indicators (KPIs) and key risk indicators (KRIs)
- Associated nodes
- Associated practices



IN PURSUIT OF **DIGITAL TRUST**

DTEF Hierarchy

- DTEF practices are actions organizations regularly execute to support the achievement of DTEF trust factors
- Activities are tasks that help accomplish specific DTEF practices
- Each activity has an identified outcome
- Each activity also has associated KPIs and KRIs
- Primary nodes for each practice are listed
- Relationships to other domains and other trust factors listed



IN PURSUIT OF **DIGITAL TRUST**

Want access to the DTEF?

Register at:

<https://www.isaca.org/digital-trust/digital-trust-ecosystem-framework-interest>

IN PURSUIT OF **DIGITAL TRUST**

Who am I?

- President @ISACA Belgium
- Co-Founder / CEO SOCRAI
- APMG Accredited Trainer @ISACA:
 - Certified Information Security Manager® (CISM)
 - Certified Data Privacy Solutions Engineer™ (CDPSE™)
- 9+ years of experience (IT Expert in Information Risk & Cybersecurity | Data Privacy Protection)
- Master in Information Risk and Cybersecurity
@ Solvay Brussels School- 2014



Egide Nzabonimana

Chief Information Security Officer
(CISO) | IT Expert in Information Risk &...



IN PURSUIT OF **DIGITAL TRUST**

